



**LINBLE**  
**力必拓**

5G industrial router

**LBT-T300-HW3**

Product specification

# Product overview

## Product overview

The 5G industrial router is an IOT gateway device that supports multiple Internet access (Ethernet/WIFI client/5G) modes and multiple local data access (WIFI 2.4G/5.8G/Ethernet/(customizable RS232/RS485)) full-stack intelligent protocols. The device is loaded with Wan communication, VPN tunnel, WIFI LAN, RS232/485 transparent transmission and other functions, and provides customers with open source code for various device adaptations, realizes seamless connection of wireless LAN, Ethernet, intelligent hardware and wireless Wan, and provides users with high-speed, safe and reliable access services.

Support WEB configuration mode, convenient and simple management, and support remote cloud control.

## Field of applicat



Electricity



Petroleum



Coal mine



Finance



Communication



Public security



Heat



Industrial Control



Weather



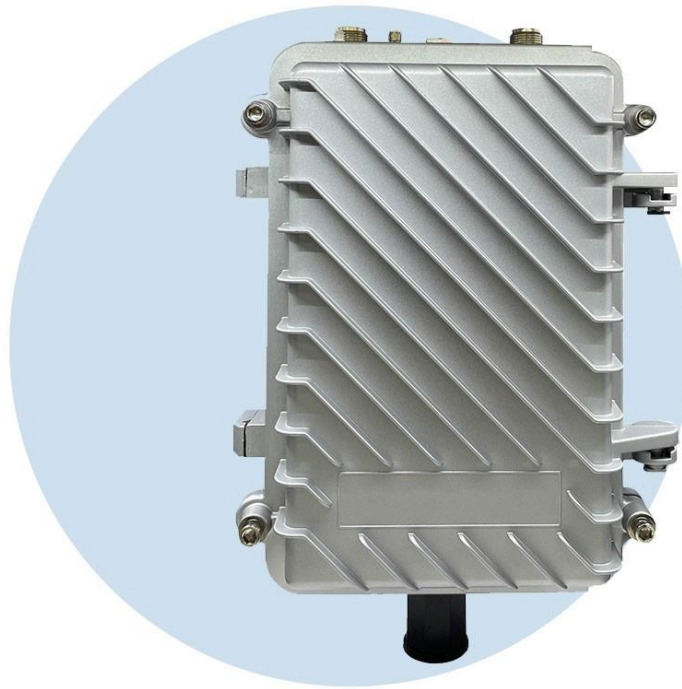
Water Conservancy



Traffic



Municipal



## Product characte

- 1, 5G, broadband, WIFI bridge access
2. Power design: POE power supply  
IEEE 802.11 AC Dual-band 2 T2R mode Maximum Rate 433Mbps IEEE 802.11 B/G/n 1  
T1R mode Maximum Rate 150Mbps
- 4, serial DTU data transmission, AT command interaction, support LED screen  
display remote control
5. Site control, port mapping, DMZ host and other functions
6. Support VPN, VPDN, PPTP Client and L2TP Client
- 7, automatic detection of network disconnection, automatic restart of dialing  
failure, timing restart and other functions
8. Wired connection, 5G network backup, automatic detection, and switching between  
wired and 5G networks
- 9, hardware and software watchdog anti-crash design, to ensure stable and reliable  
operation of equipment
10. Network port lightning protection 4KV
11. Support NB-IoT modules of China Telecom, China Mobile and China Unicom
- 12, aviation aluminum shell design, shell dustproof and waterproof grade IP66

# Functional overview

## Functions overview

### Software function

The way to surf the Internet	4/5G dial-up DHCP/Static IP/PPPoE
Number of users supported	Wired: 253, Wireless: 30
Operating system requirements	Windows XP/VISTA Linux 2.6 Windows 7 and above MAC OS: 10.3.7 and above
Browser requirements	IE: 6.0 and above Safari: 1.2.4 and above Firefox: 2.0.0.8 and above
Security management	Set up a firewall to prevent malicious attacks from the Internet on computers in the LAN. MAC filtering: prohibit MAC addresses that have been added. Access control: Control the access of computers in the LAN to the Internet. Port blocking: Block certain viruses from continuously initiating connections through a certain port to prevent Dos attacks
System Services	Virtual server: Set an internal server for Internet users to access DMZ: When the open port of the virtual server to be set is uncertain, it can be set as a DMZ host Port triggering: The wireless router can automatically open the inward service port according to the port of the LAN accessing the Internet. Serial port service: realize serial port data transmission, AT command control and other functions
Equipment management	Locale NTP server settings Back up system setup information Restart Recover Settings Information from File Change the password and restore to the factory settings Software upgrade Remote management
WLAN security mode	Open System WPA-PSK WPA2-PSK WPAPSK WPA2PSK (ie WPA-PSK and WPA2-PSK mixed mode) WPA1WPA2 (i.e. WPA and WPA2 mixed mode)

## Hardware parameters

Wireless interface	IEEE802.11ac/b/g/n
Operating frequency band	2412-2472MHz/5180-5825Mhz
Antenna	N-head female interface
WIFI transmission rate	433Mbps ( MAX )
External interface	LAN port: 1 (LAN1 is Antenna interface: 4-5 (optional) (WAN/LAN adaptive) DC power supply interface: 1 RS232/485 interface: 1 (customized) Reset key: 1 SIM card slot: 1
WIFI data	802.11n: -66dBm at 150Mbps/14dB(±2dB) 802.11b: -86dBm at 11Mbps/14dB(±2dB) 802.11g: -73dBm at 54Mbps/14dB(±2dB) 802.11ac:-90dBm at 433Mbps/14dB(±2dB)
Frequency band supported (optional)	GN (Domestic-Qualcomm): Asia, Europe and Australia: 5G Sub-6: n1, n28, n41, n77, n78, n79 n1/3/5/8/20/28 LTE FDD: B1, B2, B3, B5, B7, B8, /38/41/77/78 LTE TDD: B34, B39, B40, B41 /79 GN (Domestic-Zhanrui) B1/3/5/7/8/19/ 5G Sub-6: n1, n28, n41, n78, n79 20/28 LTE FDD: B1, B2, B3, B5, B7, B8, B38/40/41/42 LTE TDD: B34, B38,B39, B40, B41 /43
Main frequency of storage memory	Store 16 MB Main frequency: 880MHz Memory 128MB [on chip]
Overall dimensions	Length, width and height: 284 * 195 * 76 mm
Power source	Standard POE power supply: 48V/0.5A
Power consumption (current)	Less than 800mA
Work environment	Operating temperature: -30 ° C ~ + 70 ° C Storage temperature: - 40 ° C ~ + 85 ° C Humidity: 5% ~ 95%, non-condensing

# Interface description

## Interface specification

### Side A



1. SIM card slot: snap-in SIM card holder. If you need to take out the SIM card, gently push the SIM card.

LAN1/LAN2: RJ45 interface; In the standard router mode, LAN1 can be used as a WAN port and a POE power supply network port;